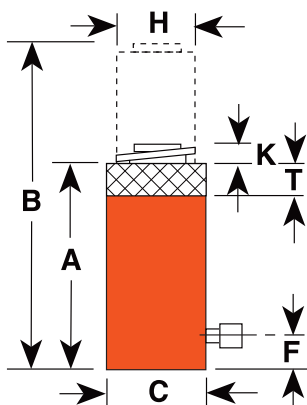


Locking Collar CYLINDER RL SERIES- STEEL

55-565 Ton Single-Acting Load-Return

- Support lifted load for extended periods of time with hydraulic pressure released.
- Visible indicator band alerts when stroke limit is reached; overflow port ("weep hole") stroke limiter prevents piston from being overextended.
- All cylinders feature coated pistons to resist corrosion and abrasion.



Cyl. Cap. (tons)	Stroke (mm)	Order No.	Oil Cap. (cm ³)	Retracted Ht. (mm)	Extended Ht. (mm)	Outside Dia. (mm)	Base to Port (mm)	Piston Rod Dia. (mm)	Piston Rod Protrusion (mm)	Nut Thickness (mm)	Bore Dia. (mm)	Cylinder Effective Area (cm ²)	Metric Tons at 700 bar	Weight (kg)
55	50.8	R552L	362	161.9	212.7	125.4	25.4	95.3	3.2	36.5	95.3	71.2	50.1	15.3
55	152.4	R556L	1,087	263.5	415.9	125.4	25.4	95.3	3.2	36.5	95.3	71.2	50.1	26.3
55	254.0	R5510L	1,811	365.1	619.1	125.4	25.4	95.3	3.2	36.5	95.3	71.2	50.1	36.3
100	50.8	R1002L	677	184.2	235.0	165.1	25.4	130.2	3.2	44.5	130.2	133.1	93.4	30.0
100	152.4	R1006L	2,030	285.8	438.2	165.1	25.4	130.2	3.2	44.5	130.2	133.1	93.4	46.8
100	254.0	R10010L	3,383	387.4	641.4	165.1	25.4	130.2	3.2	44.5	130.2	133.1	93.4	64.5
150	50.8	R1502L	1,007	206.4	257.2	204.8	31.8	158.8	3.2	44.5	158.8	197.9	139.1	53.0
150	152.4	R1506L	3,019	308.0	460.4	204.8	31.8	158.8	3.2	44.5	158.8	197.9	139.1	80.4
200	50.8	R2002L	1,355	241.3	292.1	235.0	41.3	184.2	3.2	50.8	184.2	266.3	187.2	83.1
200	152.4	R2006L	4,062	342.9	495.3	235.0	41.3	184.2	3.2	50.8	184.2	266.3	187.2	117.6
280	50.8	R2802L	1,861	247.7	298.5	276.2	41.3	215.9	3.2	57.2	215.9	366.0	257.3	118.5
280	152.4	R2806L	5,583	349.3	501.7	276.2	41.3	215.9	3.2	57.2	215.9	366.0	257.3	163.0
280	254.0	R28010L	9,305	450.9	704.9	276.2	41.3	215.9	3.2	57.2	215.9	366.0	257.3	208.1
355	50.8	R3552L	2,326	292.1	342.9	298.5	54.0	241.3	3.2	60.3	241.3	457.2	321.4	173.0
355	152.4	R3556L	6,975	393.7	546.1	298.5	54.0	241.3	3.2	60.3	241.3	457.2	321.4	232.5
430	50.8	R4302L	2,841	333.4	384.2	330.2	63.5	266.7	3.2	69.9	266.7	558.5	392.7	252.4
430	152.4	R4306L	8,520	435.0	587.4	330.2	63.5	266.7	3.2	69.9	266.7	558.5	392.7	329.2
430	254.0	R43010L	14,201	536.6	790.6	330.2	63.5	266.7	3.2	69.9	266.7	558.5	392.7	405.9
565	50.8	R5652L	3,710	371.2	422.3	377.8	69.9	304.8	3.2	79.4	304.8	729.5	512.9	368.2
565	152.4	R5656L	11,129	473.1	625.5	377.8	69.9	304.8	3.2	79.4	304.8	729.5	512.9	468.0
565	254.0	R56510L	18,548	574.7	828.7	377.8	69.9	304.8	3.2	79.4	304.8	729.5	512.9	568.0

•NOTE: Supported loads not to exceed the rated capacity of the cylinders. Not intended to support additional dynamic loads, such as those applied by moving vehicles.
Base Mounting Holes (Optional)
Available on request: Up to 1140 tons capacity and Strokes: 101.6 mm, 203.2 mm & 304.8 mm

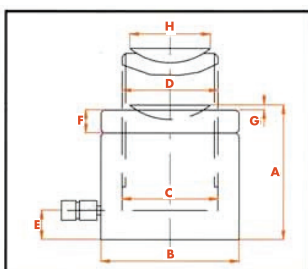


Locking collar feature permits non-hydraulic support of load.

Pancake Locking Collar CYLINDER PLC SERIES

67-565 Ton Single-Acting Load-Return

- Compact design - for use where space is limited
- Locking collar designed to support lifted load for extended periods of time with hydraulic pressure released
- Overflow port ("weep hole") prevents piston from being overextended under load.
- Special coating improves corrosion and abrasion resistance
- Cylinders come standard with hardened caps. Swivel caps reduce the effects of off-center loading and improves performance under side load.
- Equipped with 3/8" NPTF female half couplers



Cyl. Cap. (tons)	Stroke (mm)	Order No.	Oil Cap. (cm ³)	Retracted Ht. (mm)	Extended Ht. (mm)	Outside Dia. (mm)	Base to Port (mm)	Piston Rod Dia. (mm)	Piston Rod Thickness (mm)	Nut Thickness (mm)	Bore Dia. (mm)	Cylinder Effective Area (cm ²)	Metric Tons at 700 bar	Weight (kg)
67	50.8	PLC672	435	125.7	176.5	140.0	104.4	104.4	26.7	104.4	104.4	85.6	60	15.0
110	50.8	PLC1102	745	137.7	188.5	174.6	136.7	136.7	31.1	136.7	136.7	146.6	103	26.0
180	50.8	PLC1802	1,176	153.9	204.7	219.6	171.7	171.7	41.0	171.7	171.7	231.4	163	44.0
220	50.8	PLC2202	1,447	160.6	211.4	244.7	190.5	190.5	43.0	190.5	190.5	284.9	200	57.0
280	50.8	PLC2802	1,856	164.8	215.6	274.7	215.7	215.7	44.5	215.7	215.7	365.4	257	75.0
430	45	PLC4302	2,513	183.9	228.9	355.6	266.7	266.7	57.4	266.7	266.7	558.4	393	134.0
565	45	PLC5652	3,282	197.9	242.9	399.7	304.8	304.8	62.2	304.8	304.8	729.3	513	189.0

