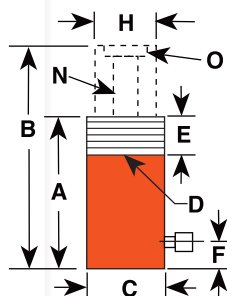


Center Hole CYLINDERS RH SERIES

10-100 Ton Single-Acting, Spring-Return

- Interchangeable piston head inserts provide versatility of application.
- 12, 20*, 30*, 50, 60 Ton Single-Acting Models Feature Threaded Collar
- Withstands full "dead-end" loads.
- Corrosion resistant standpipe has "Power Tech" treatment.
- All cylinders except RH120 are furnished with a 9796 3/8" NPT female half coupler.
- Aluminum cylinder body and piston are featured on the RHA306 cylinder.

* Model RH203 and RHA306 do not feature the collar thread. See the chart below.



* Supplied with carrying handles.

Aluminum



ASME B30.1
700 bar

** RH120 and RH121T do not have an internal threaded insert, but do have a 3/4-16 internal thread. The RH120 inlet port is 1/4" NPTF.

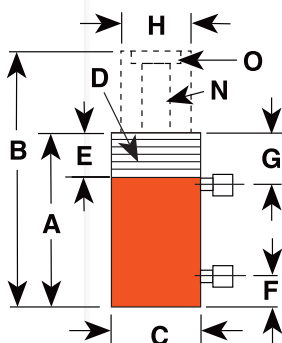
† RH102, RH108, RH203, RHA306 & RH1003 with plain collar.



Center Hole CYLINDERS RH SERIES

30-200 Ton Double-Acting

- Interchangeable piston head inserts provide versatility of application (See page 16).
- Built-in safety feature prevents over-pressurization of the retract circuit.
- Plated piston rod resists wear; superior packings provide high cycle life without leakage.
- Corrosion-resistant standpipe has "Power Tech" treatment (See page 6).
- Each cylinder has 9796 3/8" NPTF female half couplers. The 60 ton thru 200 ton models are equipped with removable carrying handles.



			A B C D E F G H N O																								
Cyl. Cap. (tons)	Stroke (mm)	Order No.	Oil Cap. (cm ³)	Re-tracted		Ex-tended		Outside Dia. (mm)	Collar Thread (in.)	Collar Thread Length (mm)	Base to Port (mm)	Piston Rod to Port (mm)	Piston Dia. (mm)	Center Hole Dia. (mm)	Insert Size (in.)	Mounting Bolt Circle (mm)	Cylinder Effective Area (cm ²)	Metric Tons at 700 bar		Weight (kg)							
				Height (mm)	Height (mm)	Push	Pull											Push	Pull		Push	Pull					
30	15	76.2 RH303	289	167	179.4	255.6	120.7	-	-	25.4	41.3	63.5	32.5	2-12	5/16 x 92.1	38.0	21.8	26.8	15.3	13.5							
30	15	152.4 RH306D	580	333	281.0	433.4	120.7	-	-	25.4	41.3	63.5	32.5	2-12	1/4-20 x 92.1	38.0	21.8	26.8	15.3	20.4							
30	20	257.2 RH3010	1,082	672	438.2	695.3	114.3	4 1/2-12	41	44.5	81.0	60.3	33.3	1 1/2-16	-	42.2	26.1	29.7	18.3	27.7							
60	25	101.6 RHA604D	807	338	241.3	342.9	177.8	-	-	39.7	57.2	101.6	54.0	3-12	1/2-13 x 130.2	79.4	33.2	55.8	25.1	16.2							
60	25	127.0 RH605*	1,009	423	241.3	368.3	165.9	-	-	25.4	44.5	101.6	54.0	3-12	1/2-13 x 130.2	79.4	33.2	55.8	25.1	33.1							
60	40	257.2 RH6010*	2,181	1,427	458.8	716.0	158.8	6 1/2-12	47.6	54.0	81.8	92.1	54.4	3-16	-	84.8	55.4	59.6	38.9	54.5							
100	45	38.1 RH1001*	526	233	165.1	203.2	212.7	-	-	31.8	58.7	127.0	79.8	4-16	1/2-11 x 177.8	138.0	60.8	97.0	42.7	38.6							
100	50	152.4 RH1006*	1,971	1,076	314.3	466.7	184.2	-	-	37.3	59.1	111.1	52.4	-	1/2-13 x 139.7	129.2	70.5	90.8	49.6	43.1							
100	45	257.2 RH10010*	3,552	1,556	495.3	752.5	215.9	8 1/2-12	57	63.5	91.7	139.7	79.8	4 1/2-12	-	138.0	60.8	97.0	42.7	109.0							
150	70	127.0 RH1505*	2,475	1,207	311.2**	438.2	215.9	-	-	37.3	68.3	139.7	65.1	-	-	194.1	94.8	136.9	66.8	67.2							
150	75	203.2 RH1508*	3,929	2,086	349.3	552.5	247.7	-	-	39.3	61.1	152.4	80.2	5-12	-	193.2	102.6	135.9	72.1	103.1							
200	75	203.2 RH2008*	5,307	2,093	408.0	611.2	273.1	-	-	57.2	81.8	190.5	103.2	6-12	1/2-12 x 198.1	1260.9	102.9	183.5	72.4	142.0							

Aluminum

* Supplied with carrying handles.

** Measured with 19 mm high serrated insert installed.

* Supplied with carrying handles.

** Measured with 19 mm high serrated insert installed.

Aluminum



30, 60, 100, 150, 200 Ton
Double-Acting Models
Feature Plain Collar



ASME B30.1
700 bar



30, 60, 100 Ton
Double-Acting Models Feature
Threaded Collar