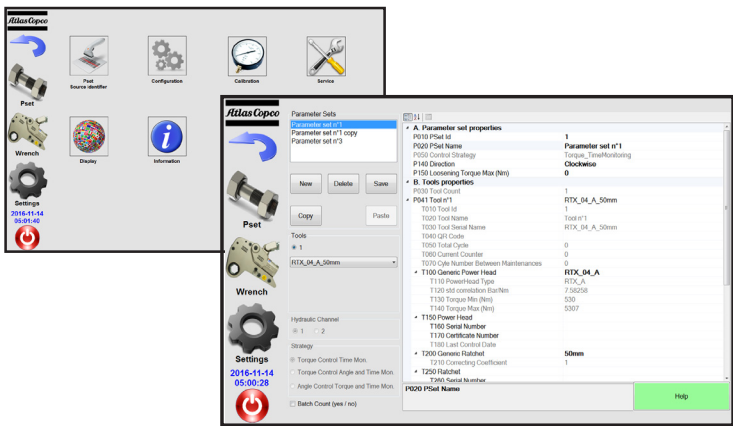


SOFTWARE

User friendly software programming enables operator to design upto 250 pre-sets to be used on different applications and scenarios.

Following strategies arrest most of material, machine and human made errors and provide traceability to improve.

- Torque control and time monitoring
- Torque control and angle monitoring with time
- Angle control and torque monitoring with time



TOOL OPTIONS

RTA tools use the same platform as our standard RT square drive and RTX direct fit tools but with additional sensors and provisions for reversible encoder. Angle encoder option empowers tool to report even a small deviation in angle (2048 readable positions over 360 degree rotation) and report errors.



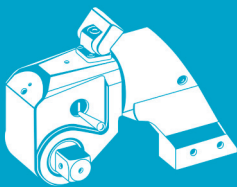
RTA Product Range	Ft.lb	Nm
Square Drive Tools	Min Max	Min Max
RT1 A (w/o encoder) RT1 AA (with encoder)	200 1340	271 1817
RT3 A (w/o encoder) RT3 AA (with encoder)	480 3230	651 4379
RT5 A (w/o encoder) RT5 AA (with encoder)	835 5590	1132 7578
RT8 A (w/o encoder) RT8 AA (with encoder)	1200 8000	1627 10845
Direct fit tools		
RTX2 power head	255 1710	346 2318
RTX4 power head	580 3855	786 5226
RTX8 power head	1143 8151	1549 11049
Ratchet Links		
RL02 A (w/o encoder) RL04 A (w/o encoder) RL08 A (w/o encoder) RL02 AA (with encoder) RL04 AA (with encoder) RL08 AA (with encoder)	Check for standard range of available ratchets.	
Pumps (220 / 110 V)		
RTA 055 - Opt. 1 (Torque, Time) 4 port RTA 055- Opt. 2 (Torque, Angle, Time) 1 port RTA 055- Opt. 3 (Torque, Angle, Time) 2 port RTA 150- Opt. 1 (Torque, Time) 4 port RTA 150- Opt. 2 (Torque, Angle, Time) 1 port RTA 150- Opt. 3 (Torque, Angle, Time) 2 port	Pumps complete with controller, pressure sensor, servo drive, full frame and protection cover	
Hoses		
Hoses 4,5m for RTA Hoses 10m for RTA Hoses 15m for RTA Hoses 20m for RTA	With cables for stroke sensor / encoder with protective cover	

COMMITTED TO SUSTAINABLE PRODUCTIVITY

www.atlascopco.com



RT ADVANCE
HYDRAULIC
WRENCH SYSTEM



Controlled, Precise and Traceable
Hydraulic Bolt Tightening



ATLAS COPCO RT ADVANCE HYDRAULIC WRENCH SYSTEM

For years, Atlas Copco has been known for providing electrical transducerised tightening solutions with a technology that keeps you ahead of the game and helps you and your customers to achieve sustainable productive growth.

RT advance is the beginning of our developments towards achieving similar standards with hydraulics.

FEATURES

- Multifunction controller
- HD 10" Colour touch Screen
- 16GB inbuilt memory
- 4 identifiers for traceability
- User friendly interface
- Torque, Angle and time based strategies
- Open protocol / ToolsNet
- VDE / VDI 2862 Part 2 compliant

- 4 USB ports (for bar code reader, label printer etc..)
- 1 VGA
- 1 LAN
- Speaker, Mic
- 1 RS232 port

- Class 1 gauge
- Pressure sensor with 0.25% full scale resolution
- Proven solenoid valves
- Reliable couplers.
- Pump options (P55 / P150)



Wifi
Remote access
system support

Highly effective radiator
cooling system for
continuous operation



Full featured remote control with
output signals for Ok, NOK, low
torque, high torque, untightening

Twin-line hose with couplers
and cables with connectors
for sensor and encoder.
Special high resistant wrap
to protect cables and hose
from abrasion, cut or impact.
Different lengths available.



- Detachable, reversible angle encoder
- Sensor controlled auto cycle
- Integrated retainer for square drive tools

