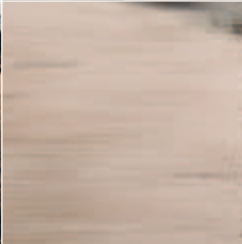
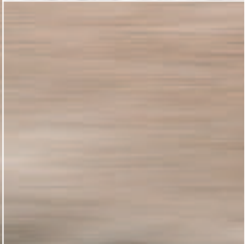
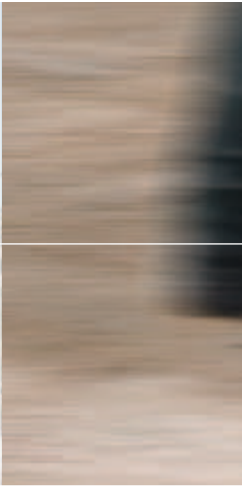


Atlas Copco Cobra petrol drill and breakers

Multi-purpose tools for higher productivity



Sustainable Productivity

Atlas Copco



Cobra – a **reliable** team mate

The Cobra™ machine has been building up a loyal fan-club since it was first launched in the 1950's. What's the secret behind its success? It is clearly the low cost of ownership.

Here's how: to begin with, the Cobra™ machine is extremely portable; second, there's virtually no set-up time; third, it's really easy to start; fourth, the ergonomic design helps boost productivity; and last but not least, the Cobra™ machine is easy to service.

A breaker for every job

Cobra™ comes in a range of different versions. There is a Cobra™ that doubles as a drill, a Cobra™ that is especially made for tie tamping and a Cobra™ that hits just plain hard.

Add to this a range of different working tools and you will find a Cobra™ that is exactly to your liking, whether you want it for cutting or breaking, compacting or driving, drilling or splitting rocks.



Drill and breakers **to-go**

The Cobra™ breaker is a machine you can just grab and go. That's because it's petrol-driven, so you don't need any compressors, hoses or cables.

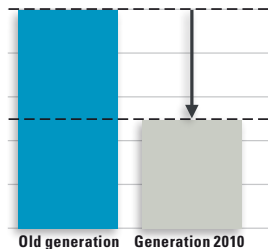
The Cobra™ breaker is great for small, quick-bite jobs. Or fencing where you have to move down a line. Or for working in remote, inaccessible locations. In fact, the Cobra™ is so practical that it has become a fixture for emergency services around the world.

Cleaner emissions, lower vibrations, less noise

All Cobra™ models are fully compliant with the limits issued by the EPA for the US market and by the EU for the European market*.

* EPA: Phase 3 Exhaust emission standards for small non-road engines (class 5)
EU: EG 97/68/EG with amendment 2002/88/EG

Exhaust emission comparison



Compared to the previous generation, the emission of hydrocarbons has been reduced by approx. 50 %.

Cobra™ breakers have very good vibration values. For example, improvements to the Cobra™ Combi have resulted in reducing vibration levels even further in comparison with the previous model. To help you compare, 3-axis vibration values are available, measured according to the ISO 28927-10 standard.

As operator comfort is a number one priority, a redesigned noise reduction system keeps the noise levels within set limits.



Easy to transport

The Cobra™ machine weighs just 25 kg and fits easily into car trunks. A wooden transport case is available.





COBRA PRO

Get the job done **faster**

The Cobra™ Pro breaker is the heavy hitter in the range. Clocking up an incredible 60 joules at the tool tip, it delivers almost twice the impact energy of other petrol-driven breakers on the market. In fact, it offers the same power-to-weight ratio as many pneumatic or hydraulic breakers, but without being tied down to a power source or hoses.

High productivity

The Cobra™ Pro breaker helps you get the job done faster. This is due to a combination of high percussive energy and high blow frequency. Put them together, and you'll see why the Cobra™ Pro breaker is such a productive machine.

With an extensive range of tools, you can use the Cobra™ Pro for everything from cutting and breaking, to driving and compacting.

APPLICATIONS

Use the Cobra™ Pro to:

- break concrete
- cut asphalt
- dig
- drive posts and fences
- drive rods and spikes
- tamp and compact soil
- tamp ballast/ties



An easy starter

With a decompression valve and electronic ignition, the Cobra Pro and Cobra TT are easy to start in all weathers. A re-designed tank cap makes starting easier than ever.



Long lifetime

The high capacity air filter in Cobra Pro and Cobra TT gives a longer lifetime. The filter is easy to access for fast servicing.

Optimized for railway applications

The Cobra™ TT has been specially designed for tie tamping. It works at the relatively high frequency of 1620 blows/min and the impact energy has been optimized to prevent pulverization of ballast.

Fast in fast out

A petrol-driven breaker is ideal for tie tamping, since you don't have to worry about compressors, hoses or cables. And weighing just 25 kg, it can be carried on and off track quickly and easily by a single operator. By allowing for fast interventions, the Cobra™ TT reduces the need for closing tracks.

The first time you use a Cobra™ TT, you'll be surprised by the low vibration levels. This is thanks to a unique,

patented vibro-dampening system that consists of leaf springs instead of the usual rubber bushings or spiral springs.

APPLICATIONS

In addition to tie tamping, the Cobra™ TT can be used for all kinds of maintenance work on tracks, crossings, access roads and railway stations –

- Spiking wooden sleepers
- Digging cable trenches
- Breaking concrete
- Cutting and compacting asphalt
- Driving posts and fencing



Hand and arm protection

Atlas Copco's unique Hand and Arm Protection System (HAPS) reduces the negative effects of harmful vibrations at a given trigger time.



Audio Warning Device – AWD

Cobra TT AWD is compatible with AWD systems. An AWD system is designed to set off a siren and stop all breakers connected to the system when the lookout releases a switch on the approach of a train.





COBRA COMBI

A real multi-purpose tool

Cobra™ Combi is not only a breaker, it's also doubles as a powerful drill. This multi-purpose machine can drill up to 30 cm per minute in solid granite and to depths of up to two metres, thanks to its built-in flushing device.

The Cobra™ Combi is great for those light service jobs or working in remote locations. It comes with its own carrying case which fits easily into the trunk of a car.

Whatever the job

With a range of many different working tools, you can use the Cobra™ Combi for everything from breaking and drilling, to cutting, driving and compacting. So whether you need to just break a small patch of

concrete or split a rock, you can get the job finished with a petrol-driven machine in the same time that it takes to set up a compressor and hoses.

APPLICATIONS

The multi-purpose Cobra™ Combi can:

- break concrete
- drill
- cut asphalt
- dig
- split rocks
- drive posts and fences
- drive rods and spikes
- tamp and compact soil
- tamp ballast/ties



An easy starter

With an electronic ignition, re-designed tank cap and choke, the Cobra™ Combi is simple to start in all weathers. An optional guide roller makes it easy to pull downwards to start the machine when it is placed higher up than the operator.



Function selector

Move the selector downwards for drilling. This will engage rotation and air flushing. For breaking, just move it upwards.



		Cobra Pro	Cobra TT	Cobra Combi
Weight	kg	25	25	25
Length	mm	927	927	732
Depth	mm	331	331	281
Width across handles	mm	611	611	585
Impact energy	Joules	60 (at 1440 bpm)	40 (at 1620 bpm)	22-25 (at 2700 bpm)
Impact rate (full speed)	blows/min	1440	1620	2700
Penetration rate with 34 mm drill bit	mm/min	-	-	200-300
Max drilling depth	m	-	-	2
Drill rotation speed	rpm			250

Engine

Engine type		1 cylinder, two-stroke	1 cylinder, two-stroke	1 cylinder, two-stroke
Cylinder displacement	cc	90	90	185
Power	kW	2 (at 5800 rpm)	1,5 (at 6500 rpm)	2 (at 2600 rpm)
Cooling system		Fan cooled	Fan cooled	Fan cooled
Starter system		Recoil starter	Recoil starter	Magnapull
Fuel type		Petrol, 90-100 octane unleaded	Petrol, 90-100 octane unleaded	Petrol, 90-100 octane unleaded
Fuel capacity	l	1,0	1,0	1,2
Fuel consumption	l/hour	0,9	0,8	1,3-1,5
Fuel mixture	%	2	2	2
Oil type		Atlas Copco two-stroke oil or similar	Atlas Copco two-stroke oil or similar	Atlas Copco two-stroke oil or similar

Vibration & sound

Vibration level 3 axes (ISO 28927-10) ¹⁾	m/s ²	4,3	4,5	5,8 (breaking) 9,3 (drilling)
Sound power level guaranteed (2000/14/EC) ¹⁾	Lw, dB(A)	109	109	108
Sound pressure level (ISO 11203) ¹⁾	Lp, r=1m, dB(A)	96	96	95

Model	Shank size	Part number
Cobra Pro	32x160	8318 0700 35
Cobra Pro	32x152	8318 0700 37
Cobra Pro	28x160	8318 0700 39
Cobra Pro	28x152	8318 0700 41
Cobra TT	32x160	8318 0700 43
Cobra TT	32x152	8318 0700 45
Cobra TT	28x160	8318 0700 47
Cobra TT	28x152	8318 0700 49
Cobra TT – AWD	32x160	8318 0700 51
Cobra Combi	22x108	8318 0800 08

1) Important: Full details of measurement are available in the Safety and Operating Instruction of the product (part no 9800 0956 90 (Cobra Pro/TT), 9800 0955 90 (Cobra Combi)). They can be found on www.acprintshop.com

A tool for every job

Atlas Copco working tools are manufactured from a steel that is purpose designed and specified for breaker applications. A controlled heat treatment process imparts both strength and high wear resistance to deep surface layers while maintaining a tough shock-resistant central core to resist breakage.

The striking face is end-milled, which results in better contact between the piston and the tool, improved transfer of energy, as well as less vibration and wear on both breaker and working tool.

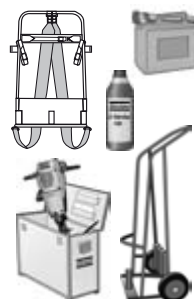
At Atlas Copco we maintain a comprehensive range of working tools to ensure that you always have the right tool for the job.

More accessories can be found in the Consumables catalogue: 3390 0650 01.

	Tip width	Working length	Weight	Part number
Shank H 32x160 mm (H 1 1/4 x 6 1/4 in)	mm	mm	kg	
Moil point		380	3,5	3083 3205 00
Moil point		450	4,0	3083 3206 00
Moil point		1000	8,2	3083 3207 00
Narrow chisel	35	380	3,5	3083 3208 00
Narrow chisel	35	450	4,0	3083 3209 00
Narrow chisel	35	1000	8,2	3083 3210 00
Wide chisel	75	380	4,0	3083 3211 00
Asphalt cutter	115	300	3,8	3083 3212 00
Digging chisel	75	380	4,2	3083 3213 00
Digging spade	125	380	5,3	3083 3214 00
Clay spade	140	380	5,4	3083 3215 00
Wedge chisel	40	400	5,5	3083 3216 00
Tie tamper	100	400	4,5	3083 3217 00
Tie tamper	100	580	5,0	3083 3217 10
Shaft for tamping pad		235	3,6	3083 3218 01
Tamping pad, round	180		7,5	3083 3301 00
Tamping pad, square	150		8,3	3083 3302 00
Tamping pad, square	200		10,3	3083 3197 00

	Size	Part number
Fuel can	5,0 litre	9234 0008 97
Carrying harness		9238 2814 10
Guide roller		9234 0009 38
2-stroke oil	1,0 litre	9238 2743 50
Trolley		9234 0006 54
Transport box		9234 0009 91

Use only authorized parts. Any damage or malfunction caused by the use of unauthorized parts is not covered by Warranty or Product Liability.



	Working length	Tip width	Weight	Part number
Shank H 22x108 mm (H 7/8 x 4 1/4 in)	mm	mm	kg	
Drill steel	1200	32	4,3	9050 3755
Drill steel	800	33	3,1	9050 4245
Drill steel	400	34	1,8	9050 3769
Reamer bit		76	1,2	9051 0460
Pilot drill.rod	800	26	3,3	9000 0296
Tie tamper	390	90	3,0	3083 3237 00
Tie tamper	460	90	3,2	9245 2823 30
Tie tamper	550	90	3,9	9245 2822 40
Moil point	350		1,4	3083 3228 00
Moil point	480		2,0	3083 3229 00
Wide chisel	240	45	1,2	3083 3231 00
Wide chisel	340	45	1,4	3083 3230 00
Wide chisel	380	75	2,6	3083 3232 00
Wide chisel	450	45	2,0	3083 4071 00
Asphalt cutter	350	125	3,0	9245 2812 90
Digging chisel	280	75	2,7	3083 3233 00
Digging spade	330	120	3,6	3083 3234 00
Wedge set 29 mm			1,5	9245 2813 81
Wedge set 34 mm			2,1	9245 2813 51
Ground rod driver	195	42	1,2	3083 3241 00
Clay spade	350	125	3,4	3083 3235 00
Wedge chisel	380	35	2,8	3083 3236 00
Driver blank	195	55	2,5	9245 2822 80
Shaft for pad	185		1,3	3083 3238 00
Tamping pad, round		175	7,5	3083 3252 10
Tamping pad, square		175	5,7	3083 3239 00
Tamper sq.,compl.	190	175	7,0	3083 3240 00
Driver pad, round		100	2,5	9245 2817 90
Post hole driver	460	Ø 40	4,2	9245 2822 31

Atlas Copco

www.atlascopco.com