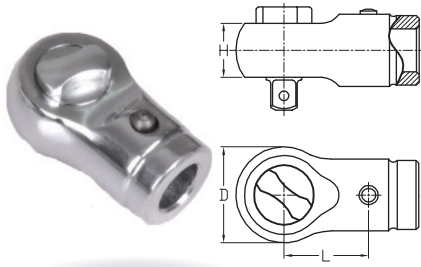


# Interchangeable Heads



## Round Hole Ratchet Head

Part Code	Drive	Round Hole	L mm	H mm	D mm	Weight g	Max Torque N.m
DR12120	1/4"	φ12	20.5	15	28	100	20
DR16125	1/4"	φ16	31.8	20	37	150	25

Part Code	Drive	Round Hole	L mm	H mm	D mm	Weight g	Max Torque N.m
DR162160	3/8"	φ16	31.8	20	38	175	160
DR163420	1/2"	φ16	31.8	20	40	280	420

## Round Hole Open End

Part Code	Open Size	Round Hole	L mm	H mm	D mm	Weight g	Max Torque N.m
OR126	6	φ12	20.5	5	22	68	6
OR127	7	φ12	20.5	5	22	66	9
OR128	8	φ12	20.5	5	22	64	13
OR129	9	φ12	20.5	5	26	74	18
OR1210	10	φ12	20.5	5	26	72	24
OR1211	11	φ12	20.5	5	26	70	25
OR1212	12	φ12	20.5	5	26	68	25
OR167	7	φ16	31.8	5	22	80	9
OR168	8	φ16	31.8	5	22	83	13
OR169	9	φ16	31.8	5.5	26	88	18
OR1610	10	φ16	31.8	5.5	26	92	24
OR1611	11	φ16	31.8	7	26	96	32
OR1612	12	φ16	31.8	7	30	100	41
OR1613	13	φ16	31.8	7	32	105	51
OR1614	14	φ16	31.8	8	35	115	63
OR1615	15	φ16	31.8	8	35	115	77

Part Code	Open Size	Round Hole	L mm	H mm	D mm	Weight g	Max Torque N.m
OR1616	16	φ16	31.8	9	38	130	92
OR1617	17	φ16	31.8	9	38	130	109
OR1618	18	φ16	31.8	10	42	140	125
OR1619	19	φ16	31.8	10	42	140	145
OR1620	20	φ16	31.8	11	50	148	160
OR1621	21	φ16	31.8	11	50	154	190
OR1622	22	φ16	31.8	11	50	162	220
OR1623	23	φ16	31.8	13	53	180	250
OR1624	24	φ16	31.8	13	53	188	280
OR1625	25	φ16	31.8	13	53	196	320
OR1626	26	φ16	31.8	13	53	204	360
OR1627	27	φ16	31.8	13	64	240	360
OR1628	28	φ16	31.8	13	66	250	360
OR1629	29	φ16	31.8	13	68	260	360
OR1630	30	φ16	31.8	13	70	270	360
OR1632	32	φ16	31.8	13	70	285	360

## Round Hole Ring End

Part Code	Ring Size	Round Hole	L mm	H mm	D mm	Weight g	Max Torque N.m
QR126	6	φ12	20.5	5	13	67	10
QR127	7	φ12	20.5	5	13	65	13
QR128	8	φ12	20.5	5	13	63	18
QR129	9	φ12	20.5	5	14.5	63	22
QR1210	10	φ12	20.5	5	16	63	25
QR1211	11	φ12	20.5	5	17.5	63	25
QR1212	12	φ12	20.5	5	19	63	25
QR167	7	φ16	31.8	8	13	70	25
QR168	8	φ16	31.8	8	14	74	34
QR169	9	φ16	31.8	9	16	78	45
QR1610	10	φ16	31.8	11	16	82	58
QR1611	11	φ16	31.8	11	18.5	87	72
QR1612	12	φ16	31.8	11	21.5	93	89
QR1613	13	φ16	31.8	11	21.5	100	105
QR1614	14	φ16	31.8	11	23	105	125
QR1615	15	φ16	31.8	11	24	111	150

Part Code	Ring Size	Round Hole	L mm	H mm	D mm	Weight g	Max Torque N.m
QR1616	16	φ16	31.8	12	26	118	175
QR1617	17	φ16	31.8	12	27	125	200
QR1618	18	φ16	31.8	12	28.5	132	230
QR1619	19	φ16	31.8	12	30.5	140	260
QR1620	20	φ16	31.8	15	33	150	290
QR1621	21	φ16	31.8	15	33	155	330
QR1622	22	φ16	31.8	15	34.5	155	360
QR1623	23	φ16	31.8	15	36	155	360
QR1624	24	φ16	31.8	15	37.5	160	360
QR1625	25	φ16	31.8	15	40	165	360
QR1626	26	φ16	31.8	16	41.5	175	360
QR1627	27	φ16	31.8	16	41.5	175	360
QR1628	28	φ16	31.8	16	45	185	360
QR1629	29	φ16	31.8	16	45	185	360
QR1630	30	φ16	31.8	16	45	185	360
QR1632	32	φ16	31.8	16	47.5	185	360

## Round Hole Open Ring End

Part Code	Ring Size	Open Size	Round Hole	L mm	H mm	D mm	Weight g	Max Torque N.m
QOR126	6	4.5	φ12	20.5	5	17	76	4
QOR127	7	5.0	φ12	20.5	5	17	74	5
QOR128	8	6.0	φ12	20.5	5	17	72	6
QOR129	9	6.5	φ12	20.5	5	18.5	72	7
QOR1210	10	7.1	φ12	20.5	5	20	72	8
QOR1211	11	8.6	φ12	20.5	5	21.5	72	10
QOR1212	12	9.0	φ12	20.5	5	23	72	12
QOR167	7	5.0	φ16	31.8	9	16	85	6
QOR168	8	6.0	φ16	31.8	9	18	88	8
QOR169	9	6.5	φ16	31.8	10	20	92	10
QOR1610	10	7.1	φ16	31.8	12	22	97	12
QOR1611	11	8.6	φ16	31.8	12	22	102	16
QOR1612	12	9.0	φ16	31.8	12	24	107	25
QOR1613	13	10.0	φ16	31.8	12	25	112	28
QOR1614	14	11.0	φ16	31.8	13	27	118	31
QOR1615	15	11.5	φ16	31.8	13	29	125	38

Part Code	Ring Size	Open Size	Round Hole	L mm	H mm	D mm	Weight g	Max Torque N.m
QOR1616	16	13.0	φ16	31.8	13	30	130	46
QOR1617	17	14.0	φ16	31.8	13	31.5	137	53
QOR1618	18	14.8	φ16	31.8	13	33	143	65
QOR1619	19	15.8	φ16	31.8	13	34.5	150	74
QOR1620	20	16.0	φ16	31.8	16	35.5	170	86
QOR1621	21	16.2	φ16	31.8	16	35.5	170	100
QOR1622	22	17.0	φ16	31.8	16	37	170	115
QOR1623	23	18.0	φ16	31.8	16	38.5	170	125
QOR1624	24	18.5	φ16	31.8	16	40	170	145
QOR1625	25	19.0	φ16	31.8	16	41	170	150
QOR1626	26	19.3	φ16	31.8	16	42	170	160
QOR1627	27	20.0	φ16	31.8	16	44	170	160
QOR1628	28	21.0	φ16	31.8	16	48	170	170
QOR1629	29	21.5	φ16	31.8	16	48	170	180
QOR1630	30	22.0	φ16	31.8	16	48	170	180
QOR1632	32	24.0	φ16	31.8	16	51	170	200

Visit website to see φ22 heads